

CERTIFICATE OF LOCATION OF GOVERNMENT CORNER

W 1/4 Corner of Section 14, Township 108, Range 40, 5TH P.M.

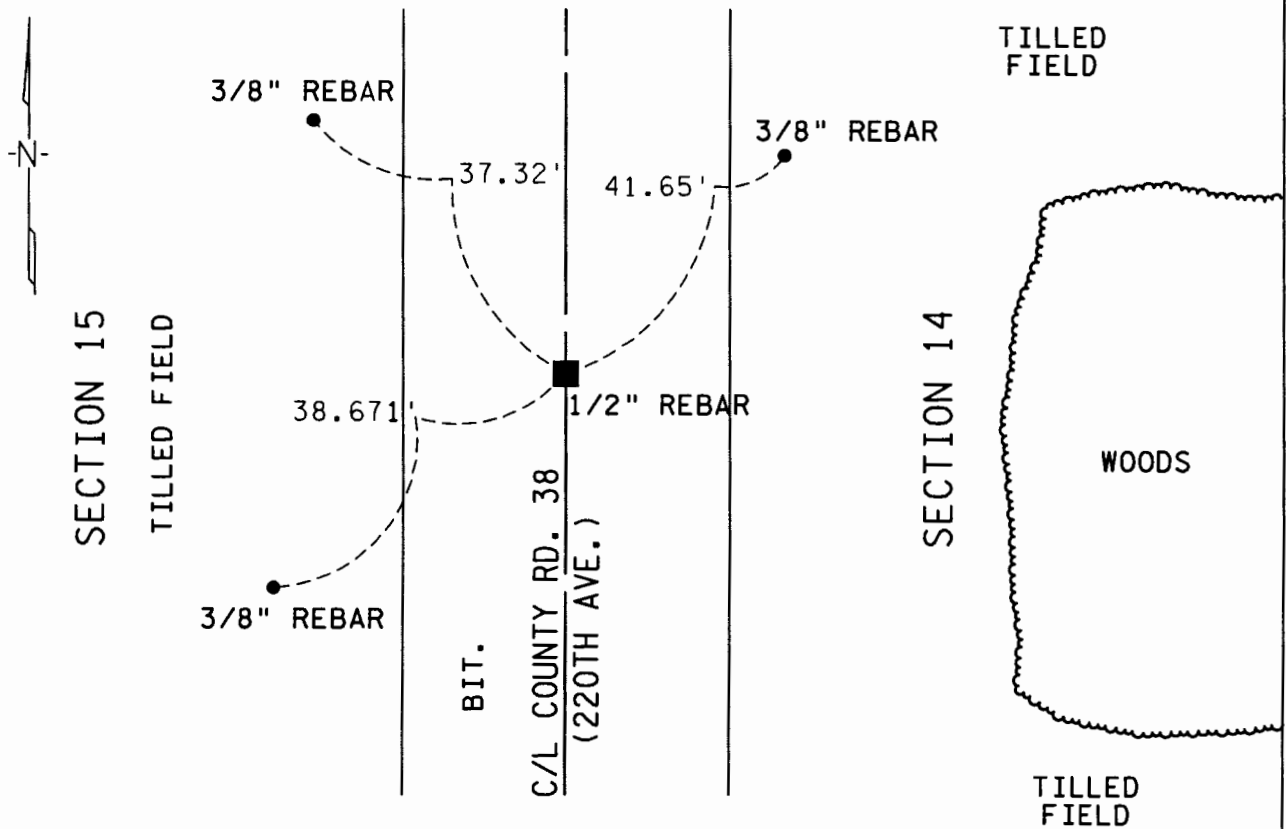
STATE OF MINNESOTA, County of MURRAY

At the corner location shown on the sketch :

On 07-15-04 found a 1/2" rebar

left monument as found, lowered monument, removed monument (explain)

Sketch of reference ties



Statement of evidence relative to this corner location is on back page

I hereby certify that this document and the data contained herein was prepared by me and under my direct supervision.

Douglas J. Reed 10-28-04
 Signature Date

Registration No. 22422

Land surveyor, Professional Engineer

County Surveyor, County Engineer

OFFICE OF THE COUNTY RECORDER

County of Murray County

I hereby certify that this document was filed in the Co. Recorder office at 3:00 P.M. on the 17th day of November A.D., 2004

County Recorder James V. Johnson
 By _____, Deputy

DOCUMENT NO. NOV 17 2004

Statement of Evidence

WEST QUARTER CORNER OF SECTION 14, TOWNSHIP 108 NORTH,
RANGE 40 WEST, 5TH P.M.

October 1861:

Louis Brockmann, Deputy Surveyor, set a post with pits and mound for corner.

June 18, 1971:

County Corner Index Reference Notes indicate an Iron Pipe was found. Set ½" rebar above pipe, flush with bit.

April 1972:

Note on Murray County Highway Department construction plan reads:

¼ Cor = Sta. 411+18.35 Def. East 00-03'20"

Placed concrete monument 6" below grade. Placed Iron Pin above.

September 05, 1980:

County Corner Index Reference Notes indicate a ½" rebar was found flush with bit.

April 7, 1992:

County Corner Index Reference Notes indicate a PK nail set above pin, flush with Bit.

July 2004:

Isaiah Reicks, Yaggy Colby Associates, found a PK nail in crack of Bit. Removed chunk of bituminous with PK nail, found ½" rebar, and checked location ties.

An analysis of the record and survey data indicate the ½" rebar was set by obliterated methods. It is accepted as a perpetuation of the Public Land Survey.

For further Information regarding this survey, contact Yaggy Colby Associates, Rochester, Minnesota.